



© 2009 Herman Miller, Inc. O.CQ201

SETU CHAIRS

DESIGN VERSATILITY, REFINED APPEARANCE

The Setu family of chairs were created for how we work and live now. Designed in partnership with Herman Miller by Studio 7.5 from Berlin, Germany, Setu sets new standards of simplicity, adaptability, comfort, and dematerialization for multipurpose seating.

The Setu offering currently includes a 5-star chair, 4-star chair, and lounge chair and ottoman, with a butterfly chair and butterfly stool coming soon. Setu is designed for nearly everywhere we sit, from collaboration areas to meeting spaces to cafes. Future models will broaden Setu's application even further.

The core of Setu is the The Kinematic Spine™, a combination of two simple polypropylene materials that are precisely engineered to achieve instant comfort, for nearly everybody. You are fully supported the moment you sit down, and the spine bends and flexes to your every move. With no tilt mechanism and only one adjustment (height), chair components are minimized. The chair is dematerialized, lightweight, and easy to use.

The spine works together with the new Lyris™ elastomer seat suspension, which stretches in every direction to distribute weight evenly, conform to your contours, and provide aeration.

The durable, non-corrosive H-Alloy™ aluminum base requires no finish, so there is no added labor or harmful toxins.



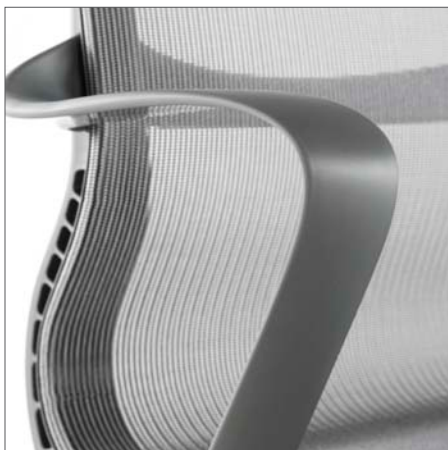








Kinematic Spine™



Ribbon Arm



Lyris™ Suspension



H-Alloy™

Setu Chairs

Honesty and innovation in materials are the foundations of design at Herman Miller, and they are hallmarks of Setu. Every detail is driven by function. From the composite Kinematic Spine, to the elastomer seat-suspension, to the H-Alloy aluminum base that requires no finish, Setu provides comfort and durability in an elegant, dematerialized design.

Seat & Back

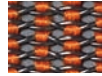
Lyris



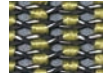
White*
8X01



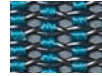
Alpine
4W01



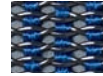
Mango
4W02



Chartreuse
4W03



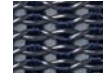
Peacock
4W04



Berry Blue
4W05



Slate Grey
4W06



Navy
4W07



Chino
4W08



Rattan
4W09



Java
4W10



Graphite
4W11

Frame

Finish



Chino
JH



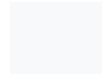
Graphite
G1



Java
5B



Slate Grey
SG



Studio White
98

Base

Finish



H-Alloy
L7

*Note: Be aware that Lyris White suspension material will show dirt and discolor from contact with darker clothing, including denim; cleaning may not be successful. It is not covered under Herman Miller warranty for discoloration. Lyris White is available only with Studio White (98) frame finish.

Samples are representative of the material to be supplied and may not indicate an exact match; some variation may occur.
Visit hermanmiller.com/materials for the current list of textiles and finishes, detailed application information, material specifications and to order samples.

Design for the Environment:

- 93 percent recyclable and manufactured using 44 percent recycled content; contains no PVCs
- MBDC Cradle-to-CradleSM Gold certification under evaluation
- GREENGUARD[®] certified
- levelTM certification under evaluation



Designers: Studio 7.5

Warranty: 12-year, 3-shift



General Dimensions:

4-star, 5-star chairs	Lounge	Ottoman
A height: 36 in. (5-star 37.125-38.375)	A height: 41.375 in.	A height: 18.875 in.
B width: 25.125 in.	B width: 27.375 in.	B width: 21.75 in.
C depth: 17.25 in.	C depth: 16.875 in.	C depth: 20.5 in.

SETU CHAIRS hermanmiller.com/setu

- Innovative Kinematic Spine bends and flexes with every move, so there's nothing to adjust, nothing to tweak, nothing to think about.
- Finely tuned elastomeric fabric provides superior suspension and conforms to the body's contours.
- Instruction manual simply reads, "Sit down."

5-star



4-star



lounge and ottoman

