

KEILHAUER

Morley





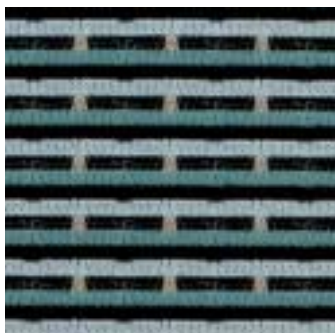
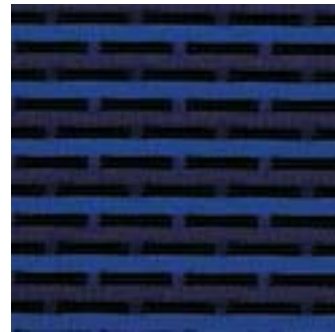
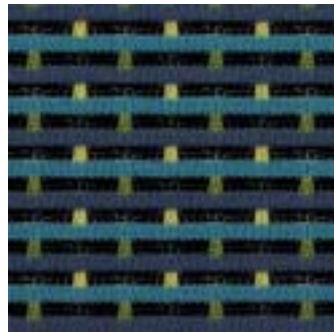
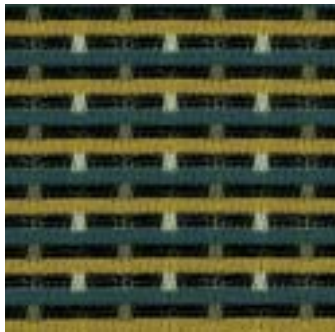
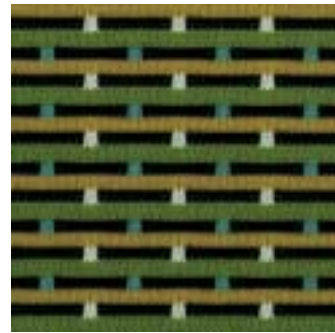
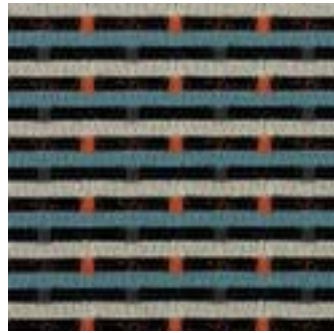
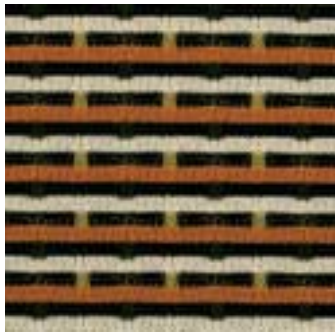
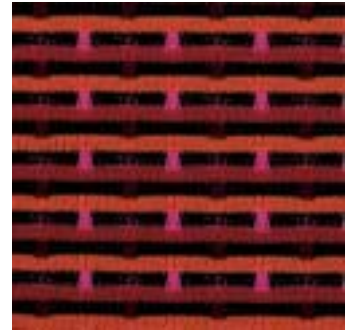
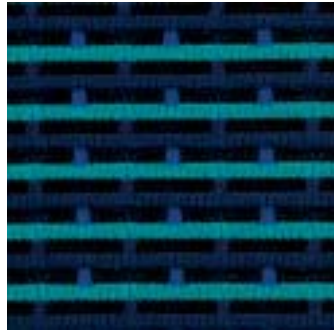
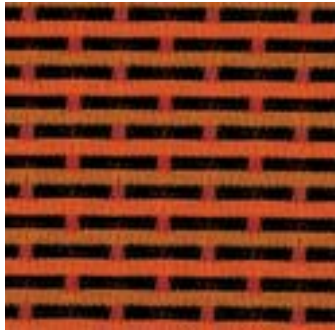
8421 FULLY UPHOLSTERED, SYNCRO-TILT, CASTERS, PNEUMATIC HEIGHT ADJUSTMENT, ADJUSTABLE BACK HEIGHT, ADJUSTABLE URETHANE ARMS

COVER IMAGE **8411** (LEFT) KNITBACK, SYNCRO-TILT, CASTERS, PNEUMATIC HEIGHT ADJUSTMENT, ADJUSTABLE BACK HEIGHT, ADJUSTABLE URETHANE ARMS, WATERFALL SEAT, POLISHED ALUMINUM BASE **8421** (RIGHT) FULLY UPHOLSTERED, SYNCRO-TILT, CASTERS, PNEUMATIC HEIGHT ADJUSTMENT, ADJUSTABLE BACK HEIGHT, ADJUSTABLE URETHANE ARMS, WATERFALL SEAT, POLISHED ALUMINUM BASE





8411 KNITBACK, SYNCRO-TILT, CASTERS, PNEUMATIC HEIGHT ADJUSTMENT, ADJUSTABLE BACK HEIGHT, ADJUSTABLE URETHANE ARMS



ORIENT MK001
AUTUMN MK005
MOSS MK009
STORM MK013

CARIBBEAN MK002
RICKSHAW MK006
RAINFOREST MK010
GROTTO MK014

ICEBERG MK003
CHAMELEON MK007
ROYALE MK011
IVORY MK015

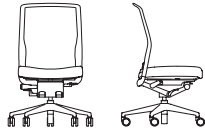
FIREWORKS MK004
ARCTIC MK008
THEATRE MK012
EBONY MK016

Morley

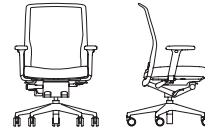
Designed by Mark Kapka



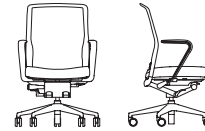
- Adjustable Arm
- Lateral Arm Adjustment
- Adjustable Back Height
- Forward Tilt (optional)
- Sliding Seat Pan
- Adjustable Seat Height
- Tilt Lock



8410
Knitback, Syncro-tilt, Casters, Pneumatic Height Adjustment, Adjustable Back Height, Armless
W 20" D 21.75–24.25"
H 38.25–42.25" SH 18.25–22.5"



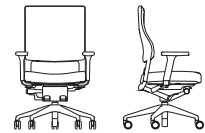
8411
Knitback, Syncro-tilt, Casters, Pneumatic Height Adjustment, Adjustable Back Height, Adjustable Urethane Arms
W 25.5" D 21.75–24.25" H 38.25–42.25" SH 18.25–22.5" AH 25–29"



8412
Knitback, Syncro-tilt, Casters, Pneumatic Height Adjustment, Adjustable Back Height, Fixed Urethane Arms
W 25.5" D 21.75–24.25" H 38.25–42.25" SH 18.25–22.5" AH 26.75–30.75"



8420
Fully Upholstered, Syncro-tilt, Casters, Pneumatic Height Adjustment, Adjustable Back Height, Armless
W 20" D 20.5–23" H 40–43.75"
SH 18.5–22.5"

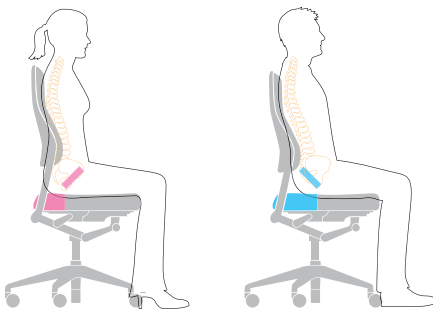


8421
Fully Upholstered, Syncro-tilt, Casters, Pneumatic Height Adjustment, Adjustable Back Height, Adjustable Urethane Arms
W 25.5" D 20.5–23" H 40–43.75"
SH 18.5–22.5" AH 25–29"



8422
Fully Upholstered, Syncro-tilt, Casters, Pneumatic Height Adjustment, Adjustable Back Height, Fixed Urethane Arms
W 24.5" D 20.5–23" H 40–43.75"
SH 18.5–22.5" AH 24.5–28.25"

Pelvic Balance Point® technology



We have discovered that men and women sit very differently.

Most men have a tendency to sit on the back of their ischial tuberosities ("sit-bones"), while most women tend to sit on the top or rolled slightly forward of these "sit-bones" – in other words more upright and forward in their chairs.

Morley allows for this fundamental difference. This **Pelvic Balance Point®** (PBP) design technology allows you to adjust your positioning on the seat in relationship to the backrest for optimum support and comfort.

T1-L5 Free Shoulders® design



The **T1-L5 Free Shoulders®** shape of Morley's backrest supports the natural curve of your spine – lumbar and thoracic. It also provides a more beneficial shape for your shoulder blades when you recline. It allows you to release yourself from the "hunched-shoulder" position you can too-easily fall into when you are constantly keying or mousing. Your chest expands and you can breathe more air into your lungs.

Due to the constant evolution of, and additions to, product lines, Keilhauer encourages reference to www.keilhauer.com.



KEILHAUER

Keilhauer
1450 Birchmount Road, Toronto, Ontario, Canada M1P 2E3
tel 416 759 5665 fax 416 759 5723 1 800 724 5665
www.keilhauer.com info@keilhauer.com